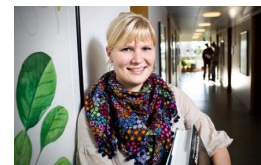


Camilla Fløjgaard
Seniorforsker
Institut for Ecoscience - Biodiversitet
Adresstype: Postadresse.
C.F. Møllers Allé 8
1110, 323
8000
Aarhus C
Danmark
E-mail: camf@ecos.au.dk
Telefon: +4587159036



Ansættelser

01.12.2023-nu Seniorforsker, Aarhus Universitet
01.08.2018-
01.12.2023 Forsker (tenure track), Aarhus Universitet
01.03.2017-
01.08.2018 Forsker, Aarhus Universitet
01.05.2013-
01.03.2017 Postdoc, Aarhus Universitet
01.05.2012-
30.04.2013 Postdoc, Carl von Ossietzky Universität Oldenburg, Tyskland
01.04.2011-
30.04.2012 Postdoc (finansieret af Forsknings- og Innovationsstyrelsen), Museo Nacional de Ciencias Naturales, Madrid, Spanien
01.02.2008-
31.01.2011 Ph.d.-studerende, Aarhus Universitet

Publikationer

Shifting baselines and the forgotten giants: integrating megafauna into plant community ecology

Søndergaard, S. A., Fløjgaard, C., Ejrnæs, R. & Svenning, J. C., maj 2025, I: *Oikos*. 2025, 5, e11134.

Shifting baselines and the forgotten giants: integrating megafauna into plant community ecology

Søndergaard, S. A., Fløjgaard, C., Ejrnæs, R. & Svenning, J. C., feb. 2025, (E-pub / Early view) I: *Oikos*.

From Grasslands to Forblands: Year-round grazing as a driver of plant diversity

Søndergaard, S. A., Ejrnæs, R., Svenning, J. C. & Fløjgaard, C., 2025, (E-pub / Early view) I: *Journal of Applied Ecology*.

Opportunities and barriers for promoting biodiversity in Danish beef production

Ejrnæs, R., Dalby, L., Bladt, J., Søndergaard, S. A., Dümke, L., Fløjgaard, C., Bruun, L. D., Ejrnæs, D. D., Moeslund, J. E. & Bruun, H. H., 20 dec. 2024, I: *iScience*. 27, 12, 111422.

The effect of small-scale agro-environmental initiatives on avian diversity in agricultural landscapes

Clausen, K. K., Heldbjerg, H. & Fløjgaard, C., 4 nov. 2024, I: *Bird Conservation International*. 34, 9 s., e33.

Zoogeochemistry of a protected area: Driven by anthropogenic impacts and animal behavior

Trepel, J., Abraham, A. J., Lundgren, E. J., Ferraro, K. M., Fløjgaard, C., Haugaard, L., Sunde, P., Tietje, M., Kamp, J. & le Roux, E., maj 2024, I: *Conservation Science and Practice*. 6, 5, e13107.

High nutrient loads hinder successful restoration of natural habitats in freshwater wetlands

Moeslund, J. E., Andersen, D. K., Brunbjerg, A. K., Bruun, H. H., Fløjgaard, C., McQueen, S. N., Nygaard, B. & Ejrnæs, R., sep. 2023, I: *Restoration Ecology*. 31, 7, e13796.

Using airborne lidar to characterize North European terrestrial high-dark-diversity habitats

Moeslund, J. E., Clausen, K. K., Dalby, L., Fløjgaard, C., Pärtel, M., Pfeifer, N., Hollaus, M. & Brunbjerg, A. K., jun. 2023, I: *Remote Sensing in Ecology and Conservation*. 9, 3, s. 354-369 16 s.

Grazing by semi-feral cattle and horses supports plant species richness and uniqueness in grasslands

Bonavent, C., Olsen, K., Ejrnæs, R., Fløjgaard, C., Hansen, M. D., Normand, S., Svenning, J.-C. & Bruun, H. H., 1 jan. 2023, I: *Applied Vegetation Science*. 26, 1, 12 s., e12718.

Scrub encroachment promotes biodiversity in temperate European wetlands under eutrophic conditions

Brunbjerg, A. K., Fløjgaard, C., Frøslev, T. G., Andersen, D. K., Bruun, H. H., Dalby, L., Goldberg, I., Juhl Lehmann, L., Moeslund, J. E. & Ejrnæs, R., nov. 2022, I: *Ecology and Evolution*. 12, 11, 19 s., e9445.

Flying insect biomass is negatively associated with urban cover in surrounding landscapes

Svenningsen, C. S., Bowler, D. E., Hecker, S., Bladt, J., Grescho, V., van Dam, N. M., Dauber, J., Eichenberg, D., Ejrnæs, R., Fløjgaard, C., Frenzel, M., Frøslev, T. G., Hansen, A. J., Heilmann-Clausen, J., Huang, Y., Larsen, J. C., Menger, J., Nayan, N. L. B. M., Pedersen, L. B. & Richter, A. & 3 flere, Dunn, R. R., Tøttrup, A. P. & Bonn, A., jun. 2022, I: *Diversity and Distributions*. 28, 6, s. 1242-1254 13 s.

Nibble, cut, stomp and burn: Biodiversity effects of disturbances in fen grassland.

Fløjgaard, C., Brunbjerg, A. K., Andersen, D. K., Dalby, L., Juhl Lehmann, L., Bruun, H. H. & Ejrnæs, R., 1 apr. 2022, I: *Applied Vegetation Science*. 25, 2, e12666.

Simple attributes predict the value of plants as hosts to fungal and arthropod communities

Bruun, H. H., Brunbjerg, A. K., Dalby, L., Fløjgaard, C., Frøslev, T. G., Haarder, S., Heilmann-Clausen, J., Høye, T. T., Læssøe, T. & Ejrnæs, R., apr. 2022, I: *Oikos*. 2022, 4, 11 s., e08823.

Guiding principles for rewilding

Carver, S., Convery, I., Hawkins, S., Beyers, R., Eagle, A., Kun, Z., Van Maanen, E., Cao, Y., Fisher, M., Edwards, S. R., Nelson, C., Gann, G. D., Shurter, S., Aguilar, K., Andrade, A., Ripple, W. J., Davis, J., Sinclair, A., Bekoff, M. & Noss, R. & 13 flere, Foreman, D., Pettersson, H., Root-Bernstein, M., Svenning, J. C., Taylor, P., Wynne-Jones, S., Featherstone, A. W., Fløjgaard, C., Stanley-Price, M., Navarro, L. M., Aykroyd, T., Parfitt, A. & Soulé, M., dec. 2021, I: *Conservation Biology*. 35, 6, s. 1882-1893 12 s.

Relationships between macro-fungal dark diversity and habitat parameters using LiDAR

Valdez, J., Brunbjerg, A. K., Fløjgaard, C., Dalby, L., Clausen, K. K., Pärtel, M., Pfeifer, N., Hollaus, M., Wimmer, M. H., Ejrnæs, R. & Moeslund, J. E., jun. 2021, I: *Fungal Ecology*. 51, 11 s., 101054.

Economic assessment of rewilding versus agri-environmental nature management

Schou, J. S., Bladt, J., Ejrnæs, R., Thomsen, M. N., Vedel, S. E. & Fløjgaard, C., maj 2021, I: *AMBIO*. 50, 5, s. 1047-1057

Detecting flying insects using car nets and DNA metabarcoding

Svenningsen, C. S., Frøslev, T. G., Bladt, J., Pedersen, L. B., Larsen, J. C., Ejrnæs, R., Fløjgaard, C., Hansen, A. J., Heilmann-Clausen, J., Dunn, R. R. & Tøttrup, A. P., mar. 2021, I: *Biology Letters*. 17, 3, 6 s., 20200833.

Simple attributes predict the importance of plants as hosts to the richness of fungi and arthropods

Bruun, H. H., Brunbjerg, A. K., Dalby, L., Fløjgaard, C., Frøslev, T. G., Haarder, S., Heilmann-Clausen, J., Høye, T. T., Læssøe, T. & Ejrnæs, R., 25 jan. 2021, (Accepteret/In press) I: *Oikos*.

Multi-taxon inventory reveals highly consistent biodiversity responses to ecospace variation

Brunbjerg, A. K., Bruun, H. H., Dalby, L., Classen, A. T., Fløjgaard, C., Frøslev, T. G., Hansen, O. L. P., Høye, T. T., Moeslund, J. E., Svenning, J.-C. & Ejrnæs, R., 1 sep. 2020, I: *Oikos*. 129, 9, s. 1381-1392 12 s.

eDNA and metabarcoding for rewilding projects monitoring, a dietary approach

Iacolina, L., Lukassen, M. B., Fløjgaard, C., Buttenschøn, R., Nielsen, J. L. & Pertoldi, C., aug. 2020, I: *Mammalian Biology*. 100, 4, s. 411-418 8 s.

Dark diversity reveals importance of biotic resources and competition for plant diversity across habitats

Fløjgaard, C., Valdez, J. W., Dalby, L., Moeslund, J. E., Clausen, K. K., Ejrnæs, R., Pärtel, M. & Brunbjerg, A. K., 1 jun. 2020, I: *Ecology and Evolution*. 10, 12, s. 6078-6088 11 s.

Predicting provenance of forensic soil samples: Linking soil to ecological habitats by metabarcoding and supervised classification

Fløjgaard, C., Frøslev, T. G., Brunbjerg, A. K., Bruun, H. H., Moeslund, J. E., Hansen, A. J. & Ejrnæs, R., 2019, I: PLOS ONE. 14, 7, 16 s., e0202844.

Trait correlation network analysis identifies biomass allocation traits and stem specific length as hub traits in herbaceous perennial plants

Kleyer, M., Trinogga, J., Cebrián-Piqueras, M. A., Trenkamp, A., Fløjgaard, C., Ejrnæs, R., Bouma, T. J., Minden, V., Meyer, M., Mantilla-Contreras, J., Albach, D. C. & Blasius, B., 2019, I: Journal of Ecology. 107, 2, s. 829-842 14 s.

Vascular plant species richness and bioindication predict multi-taxon species richness

Brunbjerg, A. K., Bruun, H. H., Dalby, L., Fløjgaard, C., Frøslev, T. G., Høye, T. T., Goldberg, I., Læssøe, T., Hansen, M. D. D., Brøndum, L., Skipper, L., Fog, K. & Ejrnæs, R., dec. 2018, I: Methods in Ecology and Evolution. 9, 12, s. 2372-2382 11 s.

Are ungulates in forests concerns or key species for conservation and biodiversity? Reply to Boulanger et al. (DOI: 10.1111/gcb.13899)

Fløjgaard, C., Bruun, H. H., Hansen, M. D., Heilmann-Clausen, J., Svenning, J.-C. & Ejrnæs, R., mar. 2018, I: Global Change Biology. 24, 3, s. 869-871 3 s.

Using dark diversity and plant characteristics to guide conservation and restoration

Moeslund, J. E., Brunbjerg, A. K., Clausen, K., Dalby, L., Fløjgaard, C., Juel, A. & Lenoir, J., dec. 2017, I: Journal of Applied Ecology. 54, 6, s. 1730-1741 12 s.

Body condition, diet and ecosystem function of red deer (*Cervus elaphus*) in a fenced nature reserve

Fløjgaard, C., De Barba, M., Taberlet, P. & Ejrnæs, R., jul. 2017, I: Global Ecology and Conservation. 11, s. 312-323 12 s.

Rewilding som planmål i Antropocæn

Ejrnæs, R., Bladt, J. & Fløjgaard, C., 2017, I: Tidsskrift for Kortlægning og Arealforvaltning. 123, 45, s. 35-46 12 s.

Vildere kronvildt

Fløjgaard, C. & Ejrnæs, R., 30 jun. 2016, I: Habitat. 7, s. 18-25

Ulvens effekt på økosystemet: Frygtens landskab

Fløjgaard, C. & Sunde, P., feb. 2016, I: Kaskelot. 209, s. 24-28 5 s.

Establishing macroecological trait datasets: digitalization, extrapolation, and validation of diet preferences in terrestrial mammals worldwide

Kissling, W. D., Dalby, L., Fløjgaard, C., Lenoir, J., Sandel, B. S., Sandom, C. J., Nielsen, K. T. & Svenning, J.-C., 2014, I: Ecology and Evolution. 4, 14, s. 2913-2930 18 s.

Mammal predator and prey species richness are strongly linked at macroscales

Sandom, C. J., Dalby, L., Fløjgaard, C., Kissling, W. D., Lenoir, J., Sandel, B. S., Nielsen, K. T., Ejrnæs, R. & Svenning, J.-C., 2013, I: Ecology. 94, 5, s. 1112-1122

Phylogenetic constraints in key functional traits behind species' climate niches: Patterns of desiccation and cold resistance across 95 *Drosophila* species

Kellermann, V., Loeschcke, V., Hoffmann, A. A., Kristensen, T. N., Fløjgaard, C., David, J. R., Svenning, J.-C. & Overgaard, J., nov. 2012, I: Evolution. 66, 11, s. 3377-3389 12 s.

Upper thermal limits of *Drosophila* are linked to species distributions and strongly constrained phylogenetically

Kellermann, V., Overgaard, J., Hoffmann, A. A., Fløjgaard, C., Svenning, J.-C. & Loeschcke, V., 2012, I: Proceedings of the National Academy of Sciences (PNAS). 109, 40, s. 16228-16233

Applications of species distribution modeling to paleobiology

Svenning, J.-C., Fløjgaard, C., A. Marske, K., Nógues-Bravo, D. & Normand, S., 17 jun. 2011, I: Quaternary Science Reviews. 30, 21-22, s. 2930-2947 17 s.

A macroecological investigation of mammal species ranges and species richness patterns

Fløjgaard, C., 2011, Aarhus Universitet. 125 s.

Climate, history and neutrality as drivers of mammal beta diversity in Europe: insights from multiscale deconstruction.

Svenning, J.-C., Fløjgaard, C. & Baselga, A., 2011, I: Journal of Animal Ecology. 80, s. 393-402

Deconstructing the mammal species richness pattern in Europe - towards and understanding of the relative importance of climate, biogeographic history, habitat heterogeneity and humans

Fløjgaard, C., Normand, S., Skov, F. & Svenning, J.-C., 2011, I: Global Ecology and Biogeography. 20, s. 218-230

Climate change risks and conservation implications for a threatened small-range mammal species

Morueta-Holme, N., Fløjgaard, C. & Svenning, J.-C., 1 apr. 2010, I: P L o S One. 5, 4, s. e10360

Northern glacial refugia for the pygmy shrew (*Sorex minutus*) in Europe revealed by phylogeographic and species distribution modelling

Vega, R., Nakazawa-Uejii, Y., Lira-Noriega, A., Fløjgaard, C., Svenning, J.-C. & Searle, J. B., 2010, I: Ecography. 33, s. 260-271

Northern glacial refugia for the pygmy shrew *Sorex minutus* in Europe revealed by phylogeographic analyses and species distribution modelling

Vega, R., Fløjgaard, C., Lira-Noriega, A., Nakazawa, Y., Svenning, J.-C. & Searle, J. B., 2010, I: Ecography. 33, 2, s. 260-271

Økoinformatik: økologi i en syndflod af data

Svenning, J.-C., Sandel, B., Fløjgaard, C. & Forchhammer, M. C., 2010, I: Aktuel Naturvidenskab. s. 34-37

Big moving day for biodiversity? A macroecological assessment of the scope for assisted colonization as a conservation strategy under global warming

Svenning, J.-C., Fløjgaard, C., Morueta-Holme, N., Lenoir, J. & Normand, S., 2009, I: IOP Conference Series: Earth and Environmental Science. 8, 1, s. 012017

Ice age distributions of European small mammals: insights from species distribution modelling

Fløjgaard, C., Normand, S., Skov, F. & Svenning, J.-C., 2009, I: Journal of Biogeography. 36, 6, s. 1152-1163

Impacts of 21st century climate changes on flora and vegetation in Denmark

Skov, F., Nygaard, B., Wind, P., Borchsenius, F., Normand, S., Balslev, H., Fløjgaard, C. & Svenning, J.-C., 2009, I: IOP Conference Series: Earth and Environmental Science. 8, s. 012015

Potential 21st century changes to the mammal fauna of Denmark – implications of climate change, land-use, and invasive species

Fløjgaard, C., Morueta-Holme, N., Skov, F., Madsen, A. B. & Svenning, J.-C., 2009, I: IOP Conference Series: Earth and Environmental Science. 8, s. 012016