

GEOTECHNICAL RESEARCH PROJECTS 2015

Department of Engineering and
Aarhus School of Engineering, Aarhus University



AARHUS
UNIVERSITY
DEPARTMENT OF ENGINEERING

KENNY KATAOIKA SØRENSEN
KKS@ENG.AU.DK

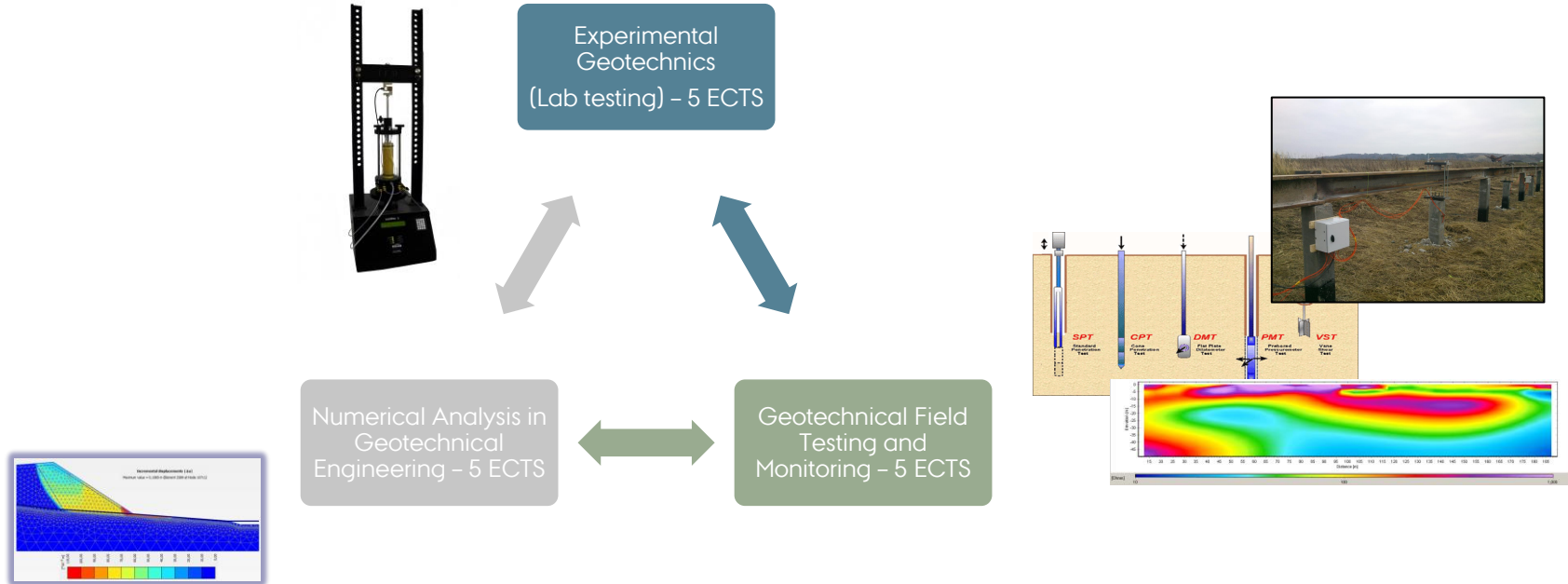
DGF MØDE, NAVITAS, AARHUS
22 OCTOBER 2015

RESEARCH BASED TEACHING

MSc. Teknisk Geologi

MSc. Civil and Architectural Engineering

Geotechnical Specialisation Package



CURRENT RESEARCH TOPICS

A.

Stress-strain behaviour
of high Plasticity OC
Palaeogene clays

B.

Rate and time effects
in clays

C.

Soil-Structure
interaction

Lab element testing, field testing / monitoring, numerical modelling



STRESS-STRAIN BEHAVIOUR OF PALAEOGENE CLAYS

PhD

Pile driving, heave and pore pressure

(Thomas Simonsen, Geo)

2015-2018

PhD

Influence of smectite on the deformation behaviour
(Michael Lodahl, COWI A/S)

2014-2017



AARHUS
UNIVERSITY

AU ENGINEERING

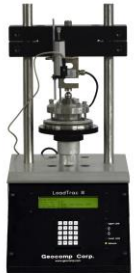
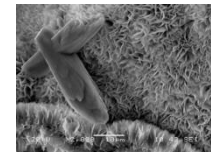
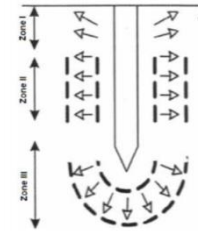


Innovationsfonden



AARHUS
UNIVERSITY

AU ENGINEERING



AARHUS
UNIVERSITY
DEPARTMENT OF ENGINEERING

KENNY KATAOIK A SØRENSEN
KKS@ENG.AU.DK

22 OCTOBER 2015

SOIL-STRUCTURE INTERACTION

NEGATIVE SKIN FRICTION

Influence of Bitumen on the development of negative skin friction on driven piles.

Full scale testing
2013 - 2018



AARHUS
UNIVERSITY
SCHOOL OF ENGINEERING

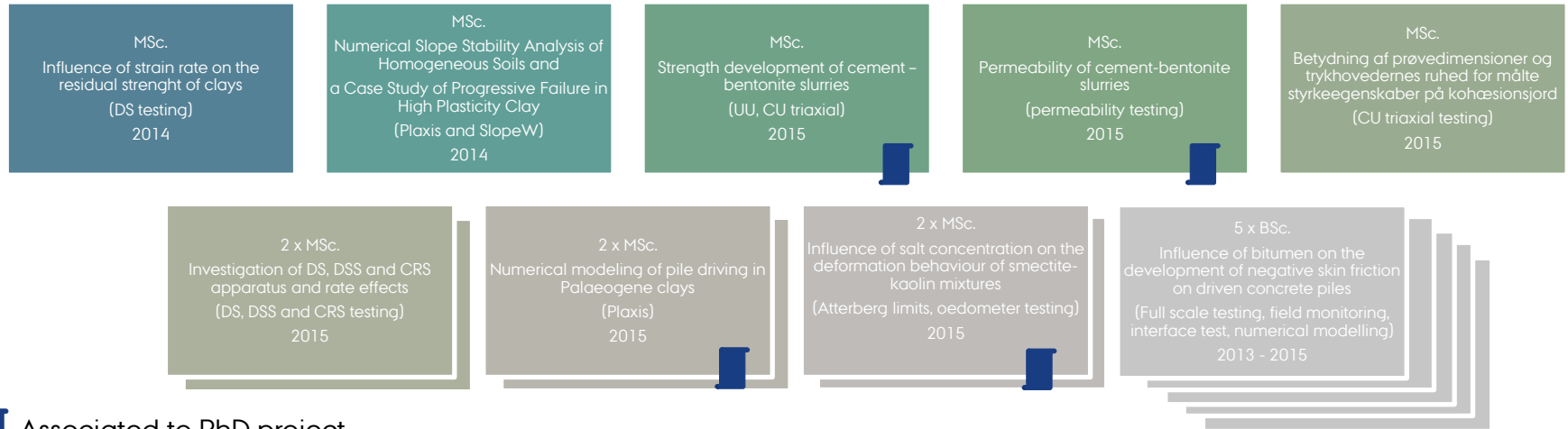


AARHUS
UNIVERSITY
DEPARTMENT OF ENGINEERING

KENNY KATAOKA SØRENSEN
KKS@ENG.AU.DK

22 OCTOBER 2015

OVERVIEW OF RECENT RESEARCH PROJECTS 2014-2015





AARHUS
UNIVERSITY