



DEPARTMENT OF ECONOMICS
AND BUSINESS ECONOMICS
AARHUS UNIVERSITY



Effects of Economic Policy Uncertainty Shocks on the Long-Run US-UK Stock Market Correlation

**Hossein Asgharian, Charlotte Christiansen, Rangan Gupta
and Ai Jun Hou**

CREATES Research Paper 2016-29

Effects of Economic Policy Uncertainty Shocks on the Long-Run US-UK Stock Market Correlation¹

Hossein Asgharian, Lund University²

Charlotte Christiansen, Aarhus University³

Rangan Gupta, University of Pretoria⁴

Ai Jun Hou, Stockholm University⁵

¹ Asgharian and Hou thank the Jan Wallander and Tom Hedelius Foundations for funding their research. Christiansen acknowledges financial support from The Danish Council of Independent Research (DFR – 4003-00022) and CREATES (Center for Research in Econometric Analysis of Time Series) funded by the Danish National Research Foundation (DNRF78).

² Hossein Asgharian, Department of Economics and Knut Wicksell Center for Financial Studies, Lund University, Box 7082, 22007 Lund, Sweden. Hossein.Asgharian@nek.lu.se.

³ Charlotte Christiansen, CREATES, Aarhus BSS, Aarhus University, Fuglesangs Allé 4, 8210 Aarhus V, Denmark. cchristiansen@econ.au.dk and Lund University. Corresponding author.

⁴ Rangan Gupta, Department of Economics, University of Pretoria, Pretoria 0002, South Africa. Rangan.Gupta@up.ac.za.

⁵ Ai Jun Hou, Stockholm Business School, Stockholm University, SE-106 91 Stockholm, Sweden. Aijun.Hou@sbs.su.se.

Effects of Economic Policy Uncertainty Shocks on the Long-Run US-UK Stock Market Correlation

Abstract: We use the economic policy uncertainty indices of Baker, Bloom, and Davis (2016) in combination with the mixed data sampling (MIDAS) approach to investigate the US and UK stock market movements. The long-run US-UK stock market correlation depends positively on US economic policy uncertainty shocks. The US long-run stock market volatility depends significantly on the US economic policy uncertainty shocks but not on UK shocks while the UK depends significantly on both.

Keywords: economic policy uncertainty index; mixed data sampling; stock market correlation; stock market volatility

JEL classifications: G11; G15; G30; C32

1. Introduction

The correlation and co-movement of international stock markets has been investigated in prominent papers such as Longin and Solnik (1995) and Forbes and Rigobon (2002). We continue this research by scrutinizing the long-run correlation between the US and UK stock markets.

We examine the effects of US and UK economic policy uncertainty (EPU) shocks on their long-run stock market volatility and correlation. We use the recent EPU indices of Baker, Bloom, and Davis (2016) which quantifies newspaper coverage of policy-related economic uncertainty, to obtain EPU shocks. We build on a growing line of research applying these economic uncertainty indices. For instance, Pástor and Veronesi (2012) show theoretically that EPU is related to stock market volatility, correlation, and jumps. Pástor and Veronesi (2013) find empirical support that individual US stock volatility and pairwise US stock correlations are higher when economic uncertainty is higher. Kelly, Pástor, and Veronesi (forthcoming) show that EPU also plays a role in the pricing of stock options. Previous research thus leads us to expect that EPU is of importance for international stock market relations.

We apply the mixed data sampling (MIDAS) framework of Ghysels, Santa-Clara, and Valkanov (2005) in order to combine daily stock returns with monthly EPU shocks. This approach allows us to concentrate on the long-run behavior of the correlation. While, real, financial and institutional factors have been utilized in explaining comovements across financial markets, to the best of our knowledge, this is the first attempt to analyze how the long-run volatility and correlation of different equity markets are influenced by economic uncertainty.

2. Data

The sample period is from 1997 to 2016 with the beginning determined by the availability of the EPU index for the UK. For the US stock market, we use the S&P500 total return index and for the UK stock market, we use the FTSE100 total return index. In order to get synchronized daily observations from both markets, we use the last transaction price at 15:00 GMT to make sure both markets are open. The intra-daily transaction prices are collected from the Thomson Reuters SIRCA database.

The news-based EPU indices for the US and UK are freely available at the monthly frequency from Baker, Bloom, and Davis (2016). The index quantifies newspaper coverage of policy-related economic uncertainty. We use log first differences of the economic policy indices as these reflect EPU shocks cf. Li, Zhang, and Gao (2015).

3. Econometric Methodology

We use the two-step DCC-MIDAS model of Colacito, Engle, and Ghysels (2011) extended to allow for exogenous variables influencing the long-run volatility and correlation as in Asgharian, Christiansen, and Hou (2016). The first step consists of estimating separate GARCH-MIDAS models for the US and UK stock returns for day $i=1,\dots,N_t$ in month t as:

$$r_{i,t-1} = \mu + \sqrt{\tau_t g_{i,t}} \varepsilon_{i,t} \quad \varepsilon_{i,t} \sim (0,1) \quad (1)$$

The total stock variance $\sigma_{i,t}^2$ is separated into a short-run component $g_{i,t}$ and a long-run component τ_t such that $\sigma_{i,t}^2 = \tau_t g_{i,t}$. A GARCH (1,1) process describes the short-run component:

$$g_{i,t} = (1 - \alpha - \beta) + \alpha \frac{(r_{i,t-1} - \mu)^2}{\tau_t} + \beta g_{i-1,t} \quad (2)$$

where $\alpha > 0$ and $\beta \geq 0$, $\alpha + \beta < 1$. The long-run component is described by a MIDAS regression where the lagged EPU shocks of the US and/or the UK (EPU_{t-k}) are included ($k=1,\dots,24$).

$$\log(\tau_t) = \theta_0 + \theta_{US} \sum_{k=1}^K \varphi_{US,k} EPU_{US,t-k} + \theta_{UK} \sum_{k=1}^K \varphi_{UK,k} EPU_{UK,t-k} \quad (3)$$

The weighting scheme used in eq. (3) is described by a beta lag polynomial:

$$\varphi_k(w_1, w_2) = \frac{\binom{k}{K}^{w_1-1} \binom{1-k}{K}^{w_2-1}}{\sum_{j=1}^K \binom{j}{K}^{w_1-1} \binom{1-j}{K}^{w_2-1}}, k = 1, \dots, K. \quad (4)$$

The parameters θ_{US} and θ_{UK} measure the effects of the US and UK economic policy uncertainty shocks on the long-run volatility. We fix $w_1 = 1$ to ensure higher weights to the most recent observations.

In the second step, we estimate the DCC-MIDAS specification for the US-UK stock market correlation using the standardized residuals ($\xi_{US,i,t}$ and $\xi_{UK,i,t}$) from the first step.

$$q_{i,t} = \bar{\rho}_t (1 - a - b) + a \xi_{US,i-1,t} \xi_{UK,i-1,t} + b q_{i-1,t}$$

$$\bar{\rho}_t = \frac{\exp(2\bar{z}_t) + 1}{\exp(2\bar{z}_t) - 1}$$

$$\bar{z}_t = \gamma_0 + \gamma_{US} \sum_{k=1}^K \delta_{US,k} EPU_{US,t-k} + \gamma_{UK} \sum_{k=1}^K \delta_{UK,k} EPU_{UK,t-k} \quad (5)$$

$q_{i,t}$ is the short-run correlation, $\bar{\rho}_t$ is a slowly moving long-run correlation ($k=1, \dots, 60$). γ_{US} and γ_{UK} measure the effects of the US and UK economic policy uncertainty on the long-run correlation, and $\delta_{US,k}$ and $\delta_{UK,k}$ are the corresponding weight schemes, defined in equation 4.

4. Results and Analyses

Table 1 shows the results for the volatility models. The long-run US volatility depends positively and significantly on the US EPU such that the larger the economic uncertainty is, the larger is the long-run US volatility. As expected the UK economic uncertainty has no influence on the long-run US volatility, as θ_{UK} is insignificant. When both the US and UK EPU are included, it is only the US that has a significant impact on long-run US volatility. The long-run UK volatility depends strongly upon the UK EPU. The long-run UK stock volatility also depends positively on the US EPU. When we consider US and UK EPU jointly, they are both significant for explaining long-run UK stock volatility. Yet, the US has a larger coefficient. This may be due to the more importance of US economic policy for UK stock market or could indicate that the measure of economic uncertainty is more precise for the US than for the UK. Panels A and B of Figure 1 show the long-run volatilities from the various specifications. For comparison, we plot the political uncertainty indices for the US and the UK in Figure 2. For both stock markets, the variation in the long-run volatility is most pronounced when both US and UK EPU shocks have been accounted. More specifically, the estimated US volatility follows closely the US uncertainty index and reflects the uncertainty spikes related to extreme events such as 9/11, the Lehman Brothers failure in 2008, the debt ceiling fight in 2011, and the Fiscal Cliff in 2012. The UK volatility mostly follows the pattern of the US uncertainty index, when both indices are included.

Table 2 shows the results for the correlation models. There is correspondence between the included exogenous variables in the volatility and correlation models. The long-run US-UK stock volatility depends positively and significantly on the US economic uncertainty shocks. Similarly, the long-run US-UK stock volatility also depends positively and significantly on the UK EPU shocks. When we account jointly for the US and UK economic policy uncertainty, only the US shocks remain significant. So, for the long-run correlation, it is

really the state of the US economy that is of importance. Panel C of Figure 1 shows the long-run correlations for the various specifications. The correlation has almost the same overall pattern no matter the choice of the uncertainty index, but the variability is strongest when accounting for both US and UK economic uncertainty shocks. In general, the correlation is higher in periods with higher uncertainty (see Figure 2).

6. Conclusion

We investigate the importance of EPU for the long-run US and UK stock market movements. We use the MIDAS framework to decompose the volatility and correlation into long-run and short-run components. The US long-run stock market volatility depends significantly on own EPU shocks while the UK depends significantly on both countries' EPU. The long-run US-UK stock market correlation is strongly and positively related to the US EPU shocks. Overall, the results suggest that UK investors need mainly to concern about US policy uncertainty, even when investing in a domestic stock portfolio.

References

- Asgharian, H., Christiansen, C., and Hou, A.J. (2016). Macro-Finance Determinants of the Long-Run Stock-Bond Correlation: The DCC-MIDAS Specification. *Journal of Financial Econometrics* 14, 617-642.
- Baker, S.R., Bloom, N., and Davis, S.J. (2016). Measuring Economic Policy Uncertainty. NBER Working Paper.
- Colacito, R., Engle, R.F., and Ghysels, E. (2011). A Component Model for Dynamic Correlations. *Journal of Econometrics* 164, 45–59.
- Forbes, K., and Rigobon, R. (2002). No Contagion, Only Interdependence: Measuring Stock Market Comovements. *Journal of Finance* 57, 2223–2261
- Ghysels, E., Santa-Clara, P., and Valkanov, R. (2005). There is a Risk-Return Trade-Off after all. *Journal of Financial Economics* 76, 509-548.
- Kelly, B., Pástor, L., and Veronesi, P. (forthcoming). The Price of Political Uncertainty: Theory and Evidence from the Option Market. *Journal of Finance*.
- Li, S-M., Zhang, B., and Gao, R. (2015). Economic Policy Uncertainty Shocks and Stock–Bond Correlations: Evidence from the US Market. *Economics Letters* 132, 91–96.
- Longin, F., and Solnik, B. (1995). Is the Correlation in International Equity Returns Constant: 1960–1990? *Journal of International Money and Finance* 14, 3-26.

Pástor, L., and Veronesi, P. (2012). Uncertainty about Government Policy and Stock Prices. *Journal of Finance* 67, 1219–1264.

Pástor, L., and Veronesi, P. (2013). Political Uncertainty and Risk Premia. *Journal of Financial Economics* 110, 520-545.

Table 1: Univariate GARCH-MIDAS estimation of the time-varying variances

The table reports the results of the GARCH-MIDAS model for the US and UK return variances. The estimations are based on daily returns (1997 to 2016) and monthly EPU's. ***, **, and * indicate significance at the 1%, 5%, and 10% levels, respectively.

	μ	α	β	θ_0	θ_{US}	$w_{2,US}$	θ_{UK}	$w_{2,UK}$	AIC	
US	Model 1	0.008***	0.115***	0.823***	-3.739***	3.888***	1.065***		-11640	
		0.002	0.006	0.011	0.060	0.613	0.092			
	Model 2	0.007***	0.093***	0.898***	-3.294***			0.674	1.000***	-11583
		0.002	0.004	0.001	0.344			0.662	0.000	
	Model 3	0.007***	0.099***	0.887***	-3.366***	2.159***	1.001***	0.956	1.000***	-11643
		0.002	0.005	0.002	0.235	0.691	0.350	0.735	0.000	
UK	Model 1	0.005**	0.104***	0.884***	-3.306***	1.091**	1.001***		-11359	
		0.002	0.004	0.002	0.267	0.555	0.000			
	Model 2	0.004**	0.102***	0.886***	-3.329***			1.466**	1.001***	-11358
		0.002	0.004	0.002	0.256			0.688	0.000	
	Model 3	0.004**	0.077***	0.904***	-3.684***	3.403***	1.103***	0.659***	1.000***	-11363
		0.002	0.003	0.004	0.103	0.698	0.105	0.170	0.000	

Table 2: DCC-MIDAS estimation of the time-varying correlation

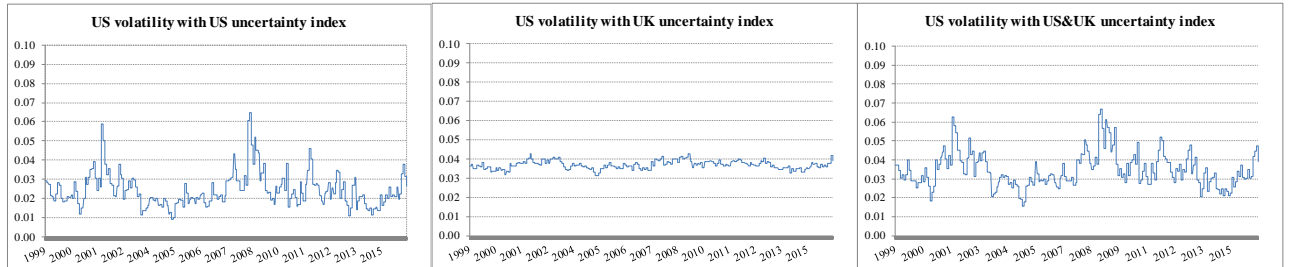
The table reports the results of the DCC-MIDAS model for the US-UK return correlation, with weights defined in equation 4). The estimations are based on daily returns (1997 to 2016) and monthly EPU's. ***, **, and * indicate significance at the 1%, 5%, and 10% levels, respectively.

	<i>a</i>	<i>b</i>	γ_0	γ_{US}	$w_{2,US}$	γ_{UK}	$w_{2,UK}$	AIC
Model 1	0.030*** 0.005	0.920*** 0.014	1.163*** 0.023	2.338*** 0.631	1.031*** 0.189			20058
Model 2	0.032*** 0.004	0.939*** 0.009	1.165*** 0.029			2.254*** 0.821	1.219*** 0.324	20012
Model 3	0.029*** 0.005	0.923*** 0.015	1.182*** 0.024	4.188*** 1.281	1.207*** 0.207	-1.037 1.244	1.562 1.058	20012

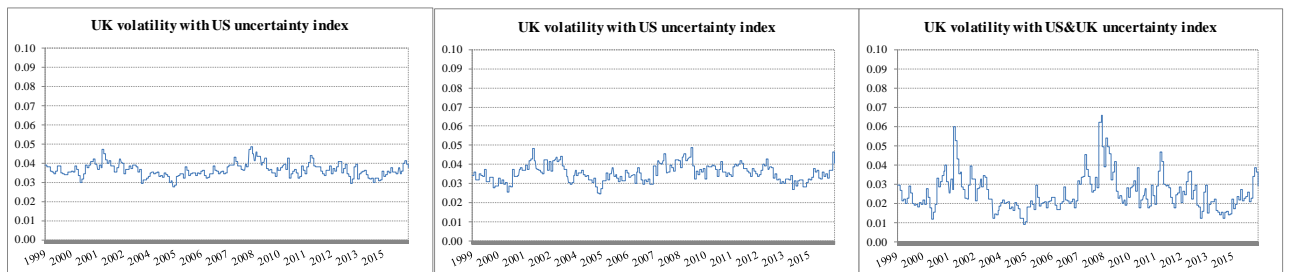
Figure 1. The long-run component of the US and UK variances and correlation

The figures show the long-run components of the US and UK variances and correlation. The left / middle / right figure show the estimations using the US / UK / US and UK EPU's in the MIDAS model.

Panel A. US volatility



Panel B. UK volatility



Panel C. US-UK correlation

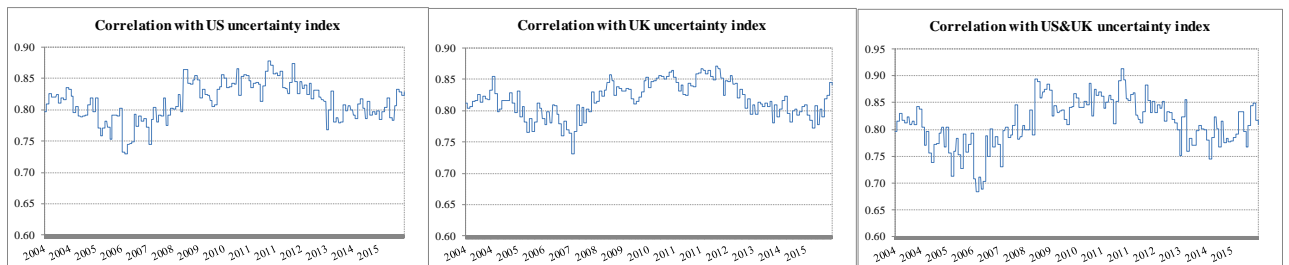
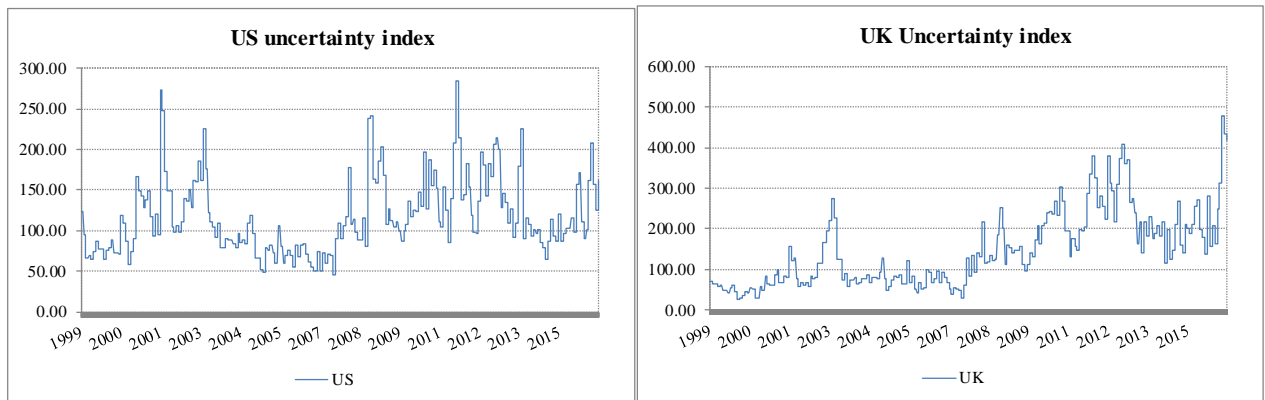


Figure 2. US and UK economic policy uncertainty

The figure shows the monthly observations of the US and UK EPU's.



Research Papers 2016



- 2016-13: Mikko S. Pakkanen and Jani Lukkarinen: Arbitrage without borrowing or short selling?
- 2016-14: Andrew J.G. Cairns, Malene Kallestrup-Lamb, Carsten P.T. Rosenskjold, David Blake and Kevin Dowd: Modelling Socio-Economic Differences in the Mortality of Danish Males Using a New Affluence Index
- 2016-15: Mikkel Bennedsen, Ulrich Hounyo, Asger Lunde and Mikko S. Pakkanen: The Local Fractional Bootstrap
- 2016-16: Martin M. Andreasen and Kasper Jørgensen: Explaining Asset Prices with Low Risk Aversion and Low Intertemporal Substitution
- 2016-17: Robinson Kruse, Christian Leschinski and Michael Will: Comparing Predictive Accuracy under Long Memory - With an Application to Volatility Forecasting
- 2016-18: Søren Johansen and Bent Nielsen: Tightness of M-estimators for multiple linear regression in time series
- 2016-19: Tim Bollerslev, Jia Li and Yuan Xue: Volume, Volatility and Public News Announcements
- 2016-20: Andrea Barletta, Paolo Santucci de Magistris and Francesco Violante: Retrieving Risk-Neutral Densities Embedded in VIX Options: a Non-Structural Approach
- 2016-21: Mikkel Bennedsen: Semiparametric inference on the fractal index of Gaussian and conditionally Gaussian time series data
- 2016-22: Søren Johansen and Morten Ørregaard Nielsen: The cointegrated vector autoregressive model with general deterministic terms
- 2016-23: Yunus Emre Ergemen and Carlos Vladimir Rodríguez-Caballero: A Dynamic Multi-Level Factor Model with Long-Range Dependence
- 2016-24: Shin Kanaya: Convergence rates of sums of α -mixing triangular arrays: with an application to non-parametric drift function
- 2016-25: Gustavo Fuet Dias, Marcelo Fernandes and Cristina M. Scherrer: Improving on daily measures of price discovery
- 2016-26: Martin M. Andreasen, Tom Engsted, Stig V. Møller and Magnus Sander: Bond Market Asymmetries across Recessions and Expansions: New Evidence on Risk Premia
- 2016-27: Kim Christensen, Ulrich Hounyo and Mark Podolskij: Testing for heteroscedasticity in jumpy and noisy high-frequency data: A resampling approach
- 2016-28: Kim Christensen, Roel Oomen and Roberto Renò: The Drift Burst Hypothesis
- 2016-29: Hossein Asgharian, Charlotte Christiansen, Rangan Gupta and Ai Jun Hou: Effects of Economic Policy Uncertainty Shocks on the Long-Run US-UK Stock Market Correlation